

JU'CAR

EL SUELO ES LA FUENTE

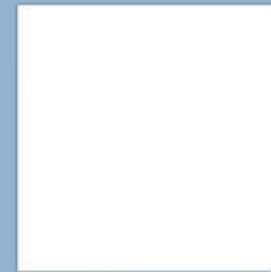


ABOUT



US

DOSSUELO is a brand relying on knowledge and boldness to execute. what is brand seeking this to create new ideas and create opportunities for designers and architects to achieve a decorative product to create a particular work.to create a new collection, we seek out the most original sources of inspiration wherever they are maybe. The rarest stone and marbles, that best reflect a contemporary character re interpreted until an innovative material of absolute excellence and quality is achieved, fully conveying the meaning and style of Europe throughout the world.



soil is source





JU'CAR

EL SUELO ES LA FUENTE



**DOSSUELO BUILDING &
CONSTRUCTION MATERIAL
COMPANY WITH 18 YEARS
EXPERIENCE OF BEING IN THIS
INDUSTRY, WITH AIM
OF INNOVATION AND PROVIDING
UNIQUE
SERVICES IN THE TILE, CERAMIC
PORCELAIN
WAS ESTABLISHED IN 2003.**





JU'CAR

THE TRACES LEFT BY THE PASSAGE OF TIME AND DAILY LIFE CREATE AN AUTHENTIC CONNECTION BETWEEN THE ARCHITECTURE OF A SPACE AND ITS HISTORY. INSPIRED BY THE AESTHETICS OF MAGNIFICENT INDUSTRIAL SURFACES, DOSSUELO IS PRESENTING JU'CAR, THE PORCELAIN TILE COLLECTION THAT BRINGS TOGETHER MEMORIES OF RUSTIC AND VINTAGE CONTEMPORARY STYLISTIC TRENDS.



| Size | 01/METAL | 02/GALAXY | 03/METALIN | 04/ALDER | 05/SUNSET | 06/CEMENT | 07/CEMENT LINE | 08/CUBISM | 09/MONNET | 10/CARIBEN | 11/MAIGRON | 12/ALDER | 13/SAMANTHA | 14/METALINE | 15/BROADWAY | 16/MODENA |
|---------|----------------|---------------|----------------|---------------|---------------|--------------|--------------------|----------------------|----------------------|----------------------|--------------|-------------------|--------------------|----------------------------|---------------|---------------|
| 40X40 | | | | | | GREY P 10 | | | | | | | | | | CREAM P 25 |
| 60X60 | | BROWN P 06 | | | BROWN P 09 | GREY P 10 | LIGHT GREY P 11 | GREY P 12 P 13 | | | | | LIGHT GREY P 21 | | | GREY P 25 |
| 60X120 | COPPER P 03 | BROWN P 05 | SILVER P 07 | BROWN P 20 | | GREY P 10 | | | | GREY P 18 P 19 | GREY P 10 | DARK GREY P 22 | BLUE P 08 | DARK BROWN P 23 P 24 | BLACK P 25 | |
| 40X120 | | | | | | | | | | | | | | | | |
| 100X100 | | | | | | | | GREY P 14 | GREY P 16 P 17 | | | | | | | |
| 80X160 | | | | | | | | DARK GREY P 15 | | | | | | | | |

CONTENT





METAL
WALL&FLOOR
COPPER
MATT
6 FACE
MORE DETAILS ON PAGE 28



60X120



GALAXY

WALL & FLOOR

BROWN
STRUCTURE
MATT
4 FACE

MORE DETAILS ON PAGE 28

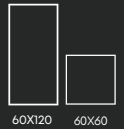


60X120

60X60



GALAXY
WALL&FLOOR
BROWN
STRUCTURE
MATT
4 FACE
MORE DETAILS ON PAGE 28





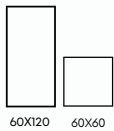
GALAXY

WALL&FLOOR

BROWN
STRUCTURE
MATT

4 FACE

MORE DETAILS ON PAGE 28





METALINE
WALL&FLOOR

| |
|--------|
| SILVER |
| BLUE |
| MATT |
| SUGER |
| 4 FACE |

MORE DETAILS ON PAGE 28



60X120



METALINE

WALL&FLOOR

SILVER
BLUE
MATT
SUGER
4 FACE
MORE DETAILS ON PAGE 28



60X120

SUNSET

FLOOR
BROWN
STRUCTURE
WALL
SPACE
MORE DETAILS ON PAGE 29



80X60



ALDER DECOR 60 x 120



CEMENT LIGHT 60 x 120



CEMENT

WALL&FLOOR

LIGHT GREY

DARK GREY

CREMA

MATT

4 FACE

MORE DETAILS ON PAGE 29



60X120 60X60 40X40



CEMENT LINE

FLOOR

LIGHT GREY
STRUCTURE
MATT

6 FACE

MORE DETAILS ON PAGE 29



60X60





CUBISM

WALL&FLOOR

LIGHT GREY
DARK GREY
CREAM
MATT
8 FACE

MORE DETAILS ON PAGE 29



60X60



CUBISM

WALL & FLOOR

LIGHT GREY
DARK GREY
CREAM
MATT
& POLICE

MORE DETAILS ON PAGE 29



60X60



MONET

WALL&FLOOR

GREY

DARK GREY

MATT

21 PAGE
MORE DETAILS ON PAGE 50



80X160



100X100



MONET
WALL&FLOOR
GREY
DARK GREY
MATT
2 FACE
MORE DETAILS ON PAGE 30

| | |
|--------|---------|
| 80X160 | 100X100 |
|--------|---------|



100X100

CARMEN

FLOOR

GREY1

MATT

4FACE

MORE DETAILS ON PAGE 30



CARMEN

FLOOR

GREY

MATT

45°FACE

MORE DETAILS ON PAGE 30



100X100



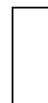
MAICRON
WALL&FLOOR
GREY
MATT
4 PAGE
MORE DETAILS ON PAGE 30



60X120



MAICRON
WALL&FLOOR
GREY
MATT
4 FACE
MORE DETAILS ON PAGE 30



40X120



60X120

ALDER DECOR
WALL&FLOOR
GREY
BROWN
MATT
3 FACE
MORE DETAILS ON PAGE 31



SAMANTHA

WALL&FLOOR

LIGHT GREY
DARK GREY
MATT
4 FACE
MORE DETAILS ON PAGE 31



60X120



SAMANTHA

WALL&FLOOR

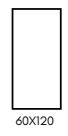
LIGHT GREY
DARK GREY
MATT
4 FACE
MORE DETAILS ON PAGE 31



60X120



BROADWAY
WALL&FLOOR
DARK BROWN
MATT
4 FACE
MORE DETAILS ON PAGE 32

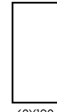


60X120





BROADWAY
WALL&FLOOR
DARK BROWN
MATT
4 FACE
MORE DETAILS ON PAGE 32



60X120

MODENA
WALL&FLOOR
BLACK
GREY
CREAM
MATT
3 FACE
MORE DETAILS ON PAGE 52



60X120



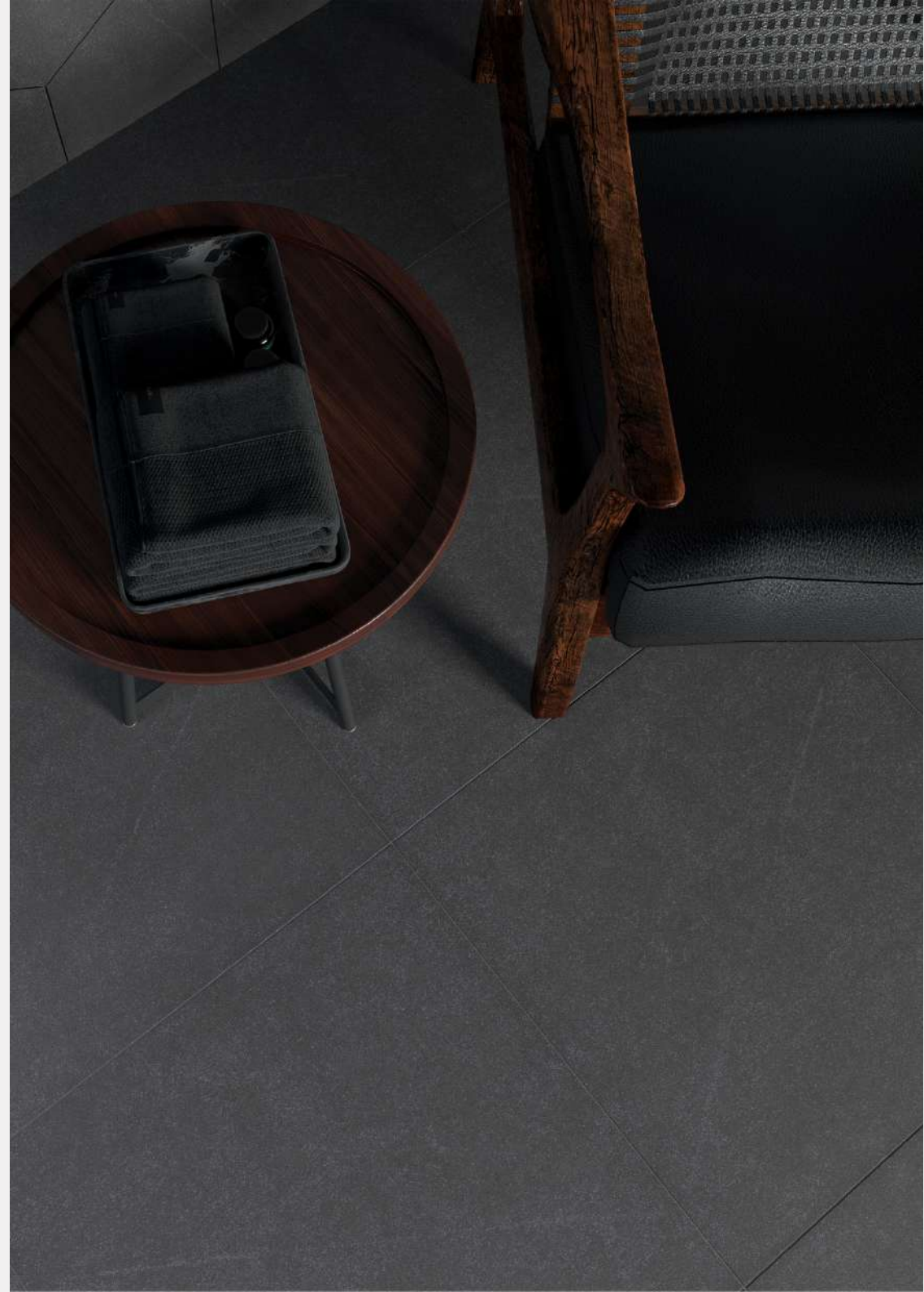
60X60

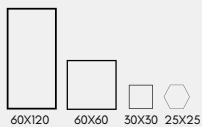


30X30



25X25



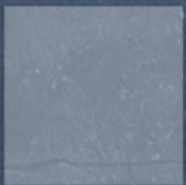


MODENA

WALL&FLOOR

- BLACK
 - GREY
 - CREAM
 - MATT
 - 3 FACE
- MORE DETAILS ON PAGE 32

CATALOGUE guide



- AVAILABLE SIZE
- PATTERN AND FACES
- TECHNICAL INFORMATION
- TECHNICAL CHARACTERISTICS
- TECHNICAL FEATURES
- PRODUCT CHARACTERISTICS
- PACKING AND WEIGHT



METAL

10 MM

COPPER

MATT

6 FACE

WALL&FLOOR

60X120

PORCELAINE

RECTIFIED

OUTDOOR' /INDOOR

ANTI SLIPPERY

MORE PICTURES ON PAGE 03



GALAXY

10 MM

BROWN

MATT

STRUCTURE

4 FACE

WALL&FLOOR

60X120, 60X60

PORCELAINE

RECTIFIED

OUTDOOR' /INDOOR

ANTI SLIPPERY

MORE PICTURES ON PAGE 04,05,06



METALINE

10 MM

BLUE

MATT

SUGER

4 FACE

WALL&FLOOR

60X120

PORCELAINE

RECTIFIED

INDOOR

ANTI SLIPPERY

MORE PICTURES ON PAGE 08



METALINE

10 MM

SILVER

MATT

SUGER

4 FACE

WALL&FLOOR

60X120

PORCELAINE

RECTIFIED

INDOOR

ANTI SLIPPERY

MORE PICTURES ON PAGE 07

SUNSET



10 MM

BROWN

MATT

STRUCTURE

6 FACE

FLOOR

60X60

PORCELAINE

RECTIFIED

OUTDOOR' /INDOOR

ANTI SLIPPERY

MORE PICTURES ON PAGE 09



CEMENT

10 MM

LIGHT GREY, DARK GREY, CREAM

MATT

6 FACE

WALL&FLOOR

25X25,30X30,60X60,60X120

PORCELAINE

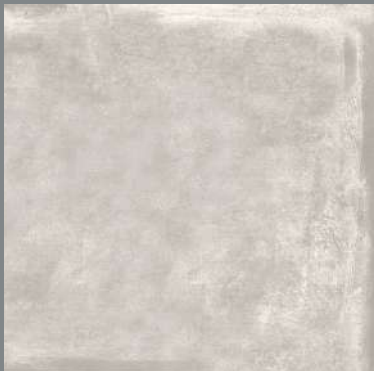
RECTIFIED

OUTDOOR' /INDOOR

ANTI SLIPPERY

MORE PICTURES ON PAGE 10

CUBISM



10 MM

DARK GREY, LIGHT GREY, CREAM

MATT

8 FACE

WALL&FLOOR

60X60

PORCELAINE

RECTIFIED

OUTDOOR' /INDOOR

ANTI SLIPPERY

MORE PICTURES ON PAGE 12,13



CEMENT LINE

10 MM

LIGHT GREY

MATT

STRUCTURE

6 FACE

FLOOR

60X60

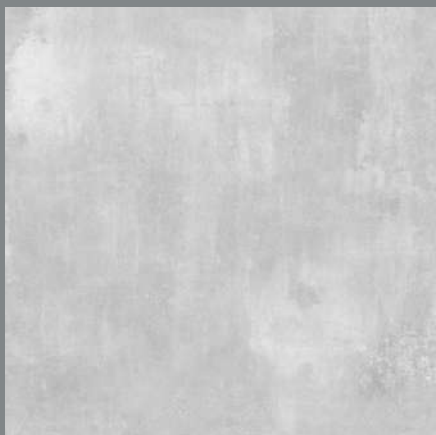
PORCELAINE

RECTIFIED

OUTDOOR' /INDOOR

ANTI SLIPPERY

MORE PICTURES ON PAGE 11



MONET

10 MM

GREY

MATT

2 FACE

FLOOR

100X100

PORCELAINE

RECTIFIED

INDOOR

MORE PICTURES ON PAGE 14,15



VISTA MONET

10 MM

DARK GREY

MATT

HEAVY STRUCTURE

4 FACE

WALL&FLOOR

80X160

PORCELAINE

RECTIFIED

INDOOR

ANTI SLIPPERY

MORE PICTURES ON PAGE 14,15



CARMEN

10 MM

GREY

MATT

4 FACE

FLOOR

100X100

PORCELAINE

RECTIFIED

INDOOR

MORE PICTURES ON PAGE 16,17



MAICRON

10 MM

GREY

MATT

4 FACE

WALL&FLOOR

60X120

PORCELAINE

RECTIFIED

INDOOR

MORE PICTURES ON PAGE 18,19

ALDER DECOR

10 MM

BROWN

MATT

3 FACE

WALL&FLOOR

60X120

PORCELAINE

RECTIFIED

OUTDOOR' /INDOOR

ANTI SLIPPERY

MORE PICTURES ON PAGE 20



ALDER DECOR

10 MM

GREY

MATT

3 FACE

WALL&FLOOR

60X120

PORCELAINE

RECTIFIED

OUTDOOR' /INDOOR

ANTI SLIPPERY

MORE PICTURES ON PAGE 10

SAMANTHA

10 MM

LIGHT GREY

MATT

4 FACE

WALL&FLOOR

60X120

PORCELAINE

RECTIFIED

OUTDOOR' /INDOOR

ANTI SLIPPERY

MORE PICTURES ON PAGE 21



SAMANTHA

10 MM

DARK GREY

MATT

4 FACE

WALL&FLOOR

60X120

PORCELAINE

RECTIFIED

OUTDOOR' /INDOOR

ANTI SLIPPERY

MORE PICTURES ON PAGE 22



MODENA

10 MM

CREAM

MATT

3 FACE

WALL&FLOOR

25X25,30X30,40X40,60X60,60X120

PORCELAINE

RECTIFIED

OUTDOOR'/INDOOR

ANTI SLIPPERY

MORE PICTURES ON PAGE 25,26



MODENA

10 MM

BLACK

MATT

3 FACE

WALL&FLOOR

25X25,30X30,40X40,60X60,60X120

PORCELAINE

RECTIFIED

OUTDOOR'/INDOOR

ANTI SLIPPERY

MORE PICTURES ON PAGE 25,26



BROUDWAY

10 MM

DARK BROWN

MATT

4 FACE

WALL&FLOOR

60X120

PORCELAINE

RECTIFIED

INDOOR

MORE PICTURES ON PAGE 23,24



MODENA

10 MM

GREY

MATT

3 FACE

WALL&FLOOR

25X25,30X30,40X40,60X60,60X120

PORCELAINE

RECTIFIED

OUTDOOR'/INDOOR

ANTI SLIPPERY

MORE PICTURES ON PAGE 25,26

| Normal size | | 600*1200 | 400*1200 | 200*1200 | 600*600 | 300*300 | 600*600 | 400*400 | 120*245 | Hexagonal | 60*285 | 300*300 | Reference | Test method | |
|---|--|-----------|-----------|-----------|-----------|---------------|-----------|-----------|-----------|---------------|---------------|---------------|--------------------|--------------------|--------------------|
| Work size | | 596*1198 | 396*1198 | 196*1198 | 596*596 | 299*303 | 596*596 | 394*394 | 118*242 | 251*292 | 60*285 | 300*300 | | | |
| LENGHT & WIDTH | A) for non-rectified, the deviation of the average size for each tile (two or four sides) From the work size, Sw | ±2mm | ±2mm | ±2mm | ±2mm | ±2mm | ±2mm | ±2mm | ±2mm | ±2mm | ±2mm | ±2mm | ISO 13006 | ISO 10545-2 | |
| | | ±2mm | ±2mm | ±2mm | ±2mm | ±2mm | ±2mm | ±2mm | ±2mm | ±2mm | ±2mm | ±2mm | Inso25 | Inso9169-2 | |
| | | Rectified | Rectified | Rectified | Rectified | ±1mm | Rectified | Rectified | ±1mm | ±1mm | ±1mm | Rectified | Dossuelo | ISO 13006 & inso25 | |
| | B)for rectified, the deviation of the average size for each tile(two or four sides) from the work size, Sw | ±1mm | ±1mm | ±1mm | ±1mm | ±1mm | ±1mm | ±1mm | ±1mm | ±1mm | ±1mm | ±1mm | ISO 13006 | ISO 10545-2 | |
| | | Undefined | Undefined | Undefined | Undefined | Undefined | Undefined | Undefined | Undefined | Undefined | Undefined | Undefined | Inso25 | Inso9169-2 | |
| | | ±0.5 mm | ±0.5 mm | ±0.5 mm | ±0.5 mm | Non rectified | ±0.5 mm | ±0.5 mm | ±0.5 mm | Non rectified | Non rectified | Non rectified | ±0.5 mm | Dossuelo | ISO 13006 |
| THICKNESS | Work thickness | 12 mm | 11.5 mm | 12 mm | 10.5 mm | 9.5 mm | 14.5 mm | 14.5 mm | 8 mm | 8.4 mm | 13.5 mm | 9.5 mm | Qualitative design | | |
| | The deviation of the average thickness of each tile from the work size thickness | ±0.5 mm | ±0.5 mm | ±0.5 mm | ±0.5 mm | ±0.5% | ±0.5 mm | ±0.5 mm | ±0.5 mm | ±0.5 % | ±0.5 % | ±0.5 mm | ±0.5 % | ISO 13006 | ISO 10545-2 |
| | | ±0.5 mm | ±0.5 mm | ±0.5 mm | ±0.5 mm | ±0.5 % | ±0.5 mm | ±0.5 mm | ±0.5 mm | ±0.5 % | ±0.5 % | ±0.5 mm | ±0.5 % | Inso25 | Inso9169-2 |
| | | ±0.3 mm | ±0.3 mm | ±0.3 mm | ±0.3 mm | ±0.3 mm | ±0.3 mm | ±0.3 mm | ±0.3 mm | ±0.3 mm | ±0.3 mm | ±0.3 mm | ±0.3 mm | Dossuelo | ISO 13006 & inso25 |
| STRAIGHTNESS OF THE SIZE (FACIAL SIDES) | A) for non-rectified tiles, the maximum deviation from straightness related to the corresponding work sizes | ±1.5 mm | ±1.5 mm | ±1.5 mm | ±1.5 mm | ±1.5 mm | ±1.5 mm | ±1.5 mm | ±1.5 mm | ±1.5 mm | ±1.5 mm | ±1.5 mm | ISO 13006 | ISO 10545-2 | |
| | | ±1.5 mm | ±1.5 mm | ±1.5 mm | ±1.5 mm | ±1.5 mm | ±1.5 mm | ±1.5 mm | ±1.5 mm | ±1.5 mm | ±1.5 mm | ±1.5 mm | Inso25 | Inso9169-2 | |
| | | Rectified | Rectified | Rectified | Rectified | ±1mm | Rectified | Rectified | ±1mm | ±1mm | ±1mm | Rectified | Dossuelo | ISO 13006 & inso25 | |
| | B) for non-rectified tiles, the maximum deviation from straightness related to the corresponding work sizes | ±0.8 mm | ±0.8 mm | ±0.8 mm | ±0.8 mm | ±0.8 mm | ±0.8 mm | ±0.8 mm | ±0.8 mm | ±0.8 mm | ±0.8 mm | ±0.8 mm | ±0.8 mm | ISO 13006 | ISO 10545-2 |
| | | Undefined | Undefined | Undefined | Undefined | Undefined | Undefined | Undefined | Undefined | Undefined | Undefined | Undefined | Undefined | Inso25 | Inso9169-2 |
| | | ±0.5 mm | ±0.5 mm | ±0.5 mm | ±0.5 mm | Non rectified | ±0.5 mm | ±0.5 mm | ±0.5 mm | Non rectified | Non rectified | Non rectified | ±0.5 mm | Dossuelo | ISO 13006 & inso25 |
| RECTANGULARITY | A) for non-rectified tiles, the maximum deviation from rectangularity related to the corresponding work sizes | ±2 mm | ±2 mm | ±2 mm | ±2 mm | ±2 mm | ±2 mm | ±2 mm | ±2 mm | ±2 mm | ±2 mm | ±2 mm | ISO 13006 | ISO 10545-2 | |
| | | ±2 mm | ±2 mm | ±2 mm | ±2 mm | ±2 mm | ±2 mm | ±2 mm | ±2 mm | ±2 mm | ±2 mm | ±2 mm | ±2 mm | Inso25 | Inso9169-2 |
| | | Rectified | Rectified | Rectified | Rectified | ±1mm | Rectified | Rectified | ±1mm | ±1mm | ±1mm | Rectified | Dossuelo | ISO 13006 & inso25 | |
| | B) for non-rectified tiles, the maximum deviation from rectangularity related to the corresponding work sizes | ±1.5 mm | ±1.5 mm | ±1.5 mm | ±1.5 mm | ±1.5 mm | ±1.5 mm | ±1.5 mm | ±1.5 mm | ±1.5 mm | ±1.5 mm | ±1.5 mm | ±1.5 mm | ISO 13006 | ISO 10545-2 |
| | | Undefined | Undefined | Undefined | Undefined | Undefined | Undefined | Undefined | Undefined | Undefined | Undefined | Undefined | Undefined | Inso25 | Inso9169-2 |
| | | ±0.5 mm | ±0.5 mm | ±0.5 mm | ±0.5 mm | Non rectified | ±0.5 mm | ±0.5 mm | ±0.5 mm | Non rectified | Non rectified | Non rectified | ±0.5 mm | Dossuelo | ISO 13006 & inso25 |



PHYSICAL PROPERTIES

| | | | | | | | | | | | | | | |
|---|--|------------------------|------------------------|------------------------|------------------------|------------------------|------------------------|------------------------|------------------------|------------------------|------------------------|-----------------------|--------------------|--------------------|
| Normal size | 600*1200 | 400*1200 | 200*1200 | 600*600 | 300*300 | 600*600 | 400*400 | 120*245 | Hexagonal | 60*285 | 300*300 | Reference | Test method | |
| Work size | 596*1198 | 396*1198 | 196*1198 | 596*596 | 299*303 | 596*596 | 394*394 | 118*242 | 251*292 | 60*285 | 300*300 | | | |
| Water absorption mass fractions | 0.5 %<E≤3% | 0.5 %<E≤3% | 0.5 %<E≤3% | 0.5 %<E≤3% | 0.5 %<E≤3% | E≤0.5% | E≤0.5% | E≤0.5% | E≤0.5% | E≤0.5% | 3%<E≤6 % | ISO 13006 | ISO 10545-3 | |
| | 0.5 %<E≤3% | 0.5 %<E≤3% | 0.5 %<E≤3% | 0.5 %<E≤3% | 0.5 %<E≤3% | E≤0.5% | E≤0.5% | E≤0.5% | E≤0.5% | E≤0.5% | 3%<E≤6 % | Inso25 | Inso9169-3 | |
| | 0.5 %<E≤3% | 0.5 %<E≤3% | 0.5 %<E≤3% | 0.5 %<E≤3% | 0.5 %<E≤3% | E≤0.5% | E≤0.5% | E≤0.5% | E≤0.5% | E≤0.5% | 3%<E≤6 % | Dossuelo | ISO 13006 & inso25 | |
| Breaking strength , in newtons | S≥1100 N | S≥1100 N | S≥1100 N | S≥1100 N | S≥1100 N | S≥1300 N | S≥1300 N | S≥1300 N | S≥1300 N | S≥1300 N | S≥1000 N | ISO 13006 | ISO 10545-4 | |
| | S≥1100 N | S≥1100 N | S≥1100 N | S≥1100 N | S≥1100 N | S≥1300 N | S≥1300 N | S≥1300 N | S≥1300 N | S≥1300 N | S≥1000 N | Inso25 | Inso9169-4 | |
| | S≥1100 N | S≥1100 N | S≥1100 N | S≥1100 N | S≥1100 N | S≥1300 N | S≥1300 N | S≥1300 N | S≥1300 N | S≥1300 N | S≥1000 N | Dossuelo | ISO 13006 & inso25 | |
| Modulus of rupture, in newtons per square millimetre not applicable to tiles with breaking strength >3000 N | R≥30 N/mm ² | R≥30 N/mm ² | R≥30 N/mm ² | R≥30 N/mm ² | R≥30 N/mm ² | R≥35 N/mm ² | R≥35 N/mm ² | R≥35 N/mm ² | R≥35 N/mm ² | R≥35 N/mm ² | R≥22N/mm ² | ISO 13006 | ISO 10545-4 | |
| | R≥30 N/mm ² | R≥30 N/mm ² | R≥30 N/mm ² | R≥30 N/mm ² | R≥30 N/mm ² | R≥35 N/mm ² | R≥35 N/mm ² | R≥35 N/mm ² | R≥35 N/mm ² | R≥35 N/mm ² | R≥22N/mm ² | Inso25 | Inso9169-4 | |
| | R≥35 N/mm ² | R≥35 N/mm ² | R≥35 N/mm ² | R≥35 N/mm ² | R≥35 N/mm ² | R≥40 N/mm ² | R≥40 N/mm ² | R≥40 N/mm ² | R≥40 N/mm ² | R≥40 N/mm ² | R≥27 N/mm ² | Dossuelo | ISO 13006 & inso25 | |
| Abrasion resistance | Report abrasion class and cycles passed. | | | | | | | | | | | ISO 13006 | ISO 10545-7 | |
| | | | | | | | | | | | | Inso25 | Inso9169-7 | |
| | 2 | 2 | 2 | 2 | 2 | 2 | 2 | 2 | 2 | 2 | 2 | 1 | Dossuelo | ISO 13006 & inso25 |
| Coefficient of linear thermal expansion (from ambient temperature to 100°C) | Test method available | | | | | | | | | | | ISO 13006 | ISO 10545-8 | |
| | | | | | | | | | | | | Inso25 | Inso9169-8 | |
| | 6.8*10 ⁻⁶ | 6.8*10 ⁻⁶ | 6.8*10 ⁻⁶ | 6.8*10 ⁻⁶ | 6.8*10 ⁻⁶ | 6.8*10 ⁻⁶ | 6.8*10 ⁻⁶ | 6.8*10 ⁻⁶ | 6.8*10 ⁻⁶ | 6.8*10 ⁻⁶ | 6.8*10 ⁻⁶ | 6.8*10 ⁻⁶ | Dossuelo | ISO 13006 & inso25 |
| Thermal shock resistance | Test method available | | | | | | | | | | | ISO 13006 | ISO 10545-9 | |
| | | | | | | | | | | | | Inso25 | Inso9169-9 | |
| | No damage at all | | | | | | | | | | | Dossuelo | ISO 13006 & inso25 | |
| Crazing resistance : glazed tiles | Required | | | | | | | | | | | ISO 13006 | ISO 10545-11 | |
| | | | | | | | | | | | | Inso25 | Inso9169-11 | |
| | The test is performed at a pressure of 6 bar and no problem is observed | | | | | | | | | | | Dossuelo | ISO 13006 & inso25 | |
| Frost resistance | Required | | | | | | | | | | | Test method available | ISO 13006 | ISO 10545-12 |
| | | | | | | | | | | | | Inso25 | Inso9169-12 | |
| | No damage at all | | | | | | | | | | | No approved | Dossuelo | ISO 13006 & inso25 |
| Small colour differences | ΔE<0.75 | ΔE<0.75 | ΔE<0.75 | ΔE<0.75 | ΔE<0.75 | ΔE<0.75 | ΔE<0.75 | ΔE<0.75 | ΔE<0.75 | ΔE<0.75 | ΔE<0.75 | ΔE<0.75 | ISO 13006 | ISO 10545-16 |
| | ΔE<0.75 | ΔE<0.75 | ΔE<0.75 | ΔE<0.75 | ΔE<0.75 | ΔE<0.75 | ΔE<0.75 | ΔE<0.75 | ΔE<0.75 | ΔE<0.75 | ΔE<0.75 | ΔE<0.75 | Inso25 | Inso9169-16 |
| | ΔE<0.65 | ΔE<0.65 | ΔE<0.65 | ΔE<0.65 | ΔE<0.65 | ΔE<0.65 | ΔE<0.65 | ΔE<0.65 | ΔE<0.65 | ΔE<0.65 | ΔE<0.65 | ΔE<0.65 | Dossuelo | ISO 13006 & inso25 |
| Impact resistance | Not applicable | Not applicable | Not applicable | Not applicable | Not applicable | e<0.85pa & no-split | e<0.85pa & no-split | e<0.85pa & no-split | e<0.85pa & no-split | e<0.85pa & no-split | e<0.85pa & no-split | Not applicable | ISO 13006 | ISO 10545-5 |
| | | | | | | | | | | | | | Inso25 | Inso9169-5 |
| | e<0.88pa | e<0.88pa | e<0.88pa | e<0.88pa | e<0.88pa | e<0.81pa & no-split | e<0.81pa & no-split | e<0.81pa & no-split | e<0.81pa & no-split | e<0.81pa & no-split | e<0.81pa & no-split | e<0.88pa | Dossuelo | ISO 13006 & inso25 |
| Resistance to staining | Minimum class 3 | | | | | | | | | | | ISO 13006 | ISO 10545-14 | |
| | Minimum class 3 | | | | | | | | | | | Inso25 | Inso9169-14 | |
| | Class 3 | Class 3 | Class 3 | Class 3 | Class 3 | Class 3 | Class 3 | Class 3 | Class 3 | Class 3 | Class 3 | Class 3 | Dossuelo | ISO 13006 & inso25 |
| Resistance to chemicals | Manufactures is to state classification | | | | | | | | | | | ISO 13006 | ISO 10545-13 | |
| | | | | | | | | | | | | Inso25 | Inso9169-13 | |
| | GB | GB | GB | GB | GB | GB | GB | GB | GB | GB | GB | GB | Dossuelo | ISO 13006 & inso25 |

STRONG
COMMITMENT
TO
ETHICAL,
SUSTAINABLE
GROWTH.



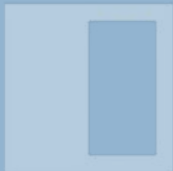
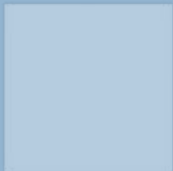


PACKING SPECIFICATION

| working size | 80x160 | 100x100 | 60x120 | 60x120 polished | 40x120 | 60x60 | 30x30 | hexagon |
|------------------------|---------|-----------|----------|-----------------|----------|---------|----------|---------|
| thickness | 10mm | 10mm | 12+_5% | 12.5 mm | 11.5 mm | 10.5mm | 9.5mm | 9mm |
| tile per carton | 1 | 2 | 2 | 2 | 3 | 4 | 12 | 12 |
| weight of carton | 34 (kg) | 54 (kg) | 38 (kg) | 39 (kg) | 37 (kg) | 32(kg) | 21.5(kg) | 20 (kg) |
| dimensions size (mm) | 800x160 | 1000x1000 | 596x1198 | 597x1198 | 396x1196 | 595x595 | 300x300 | 249x249 |
| carton per pallet | 45 | 39 | 64 | 60 | 64 | 80 | 81 | 81 |
| sqm per carton(m2) | 1.28 | 2 | 1.43 | 1.43 | 1.42 | 1.41 | 1.08 | 1.05 |
| sqm per pallet (m2) | 57.6 | 78 | 91.52 | 85.8 | 90.9 | 112.8 | 87.5 | 85.1 |
| weight of pallet | 1530 | 2106 | 2432 | 2340 | 2368 | 2560 | 1742 | 1620 |
| no of carton in truck | 630 | 468 | | 600 | 640 | 760 | 1094 | 1175 |
| sqm in truck | 806.4 | 936 | | 858 | 908.8 | 1071.6 | 1181 | 1233.2 |
| no of pallets in truck | 14 | 12 | | 10 | 10 | 9.5 | 13.5 | 14.5 |
| weigh of truck | 21,420 | 25,272 | | 23,400 | 23,680 | 24,320 | 23,510 | 23,490 |



EL SUELO ES LA FUENTE



DOSSUELO BUILDING & CONSTRUCTION
MATERIALS LLC.
NO 1515, CHURCHILL TOWER , DUBAI, UAE.

 WWW.DOSSUELO.COM

 DOSSUELO  +971 52 743 4822